

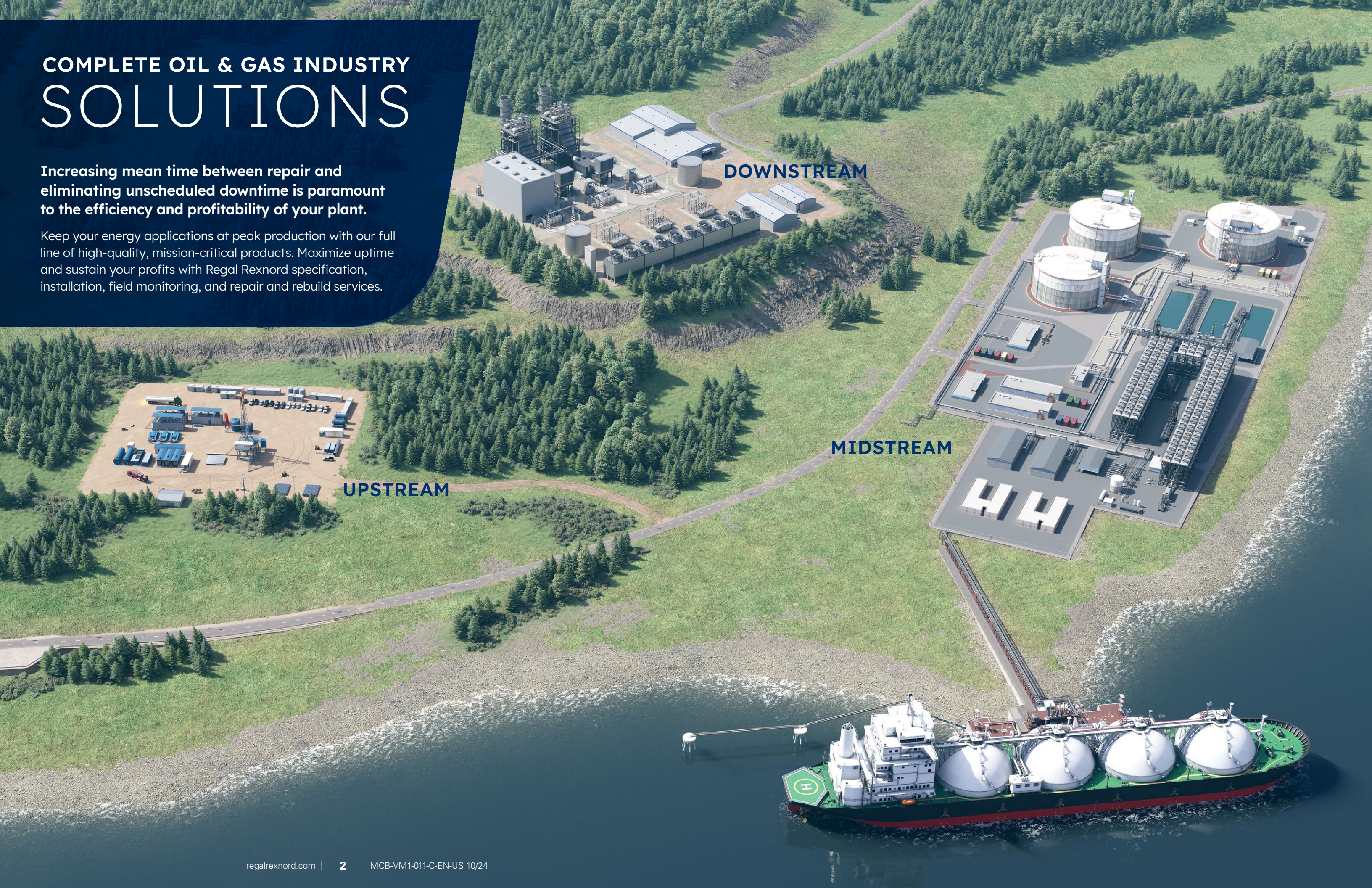


**REGAL REXNORD™ OIL & GAS  
INDUSTRY SOLUTIONS**

# COMPLETE OIL & GAS INDUSTRY SOLUTIONS

Increasing mean time between repair and eliminating unscheduled downtime is paramount to the efficiency and profitability of your plant.

Keep your energy applications at peak production with our full line of high-quality, mission-critical products. Maximize uptime and sustain your profits with Regal Rexnord specification, installation, field monitoring, and repair and rebuild services.





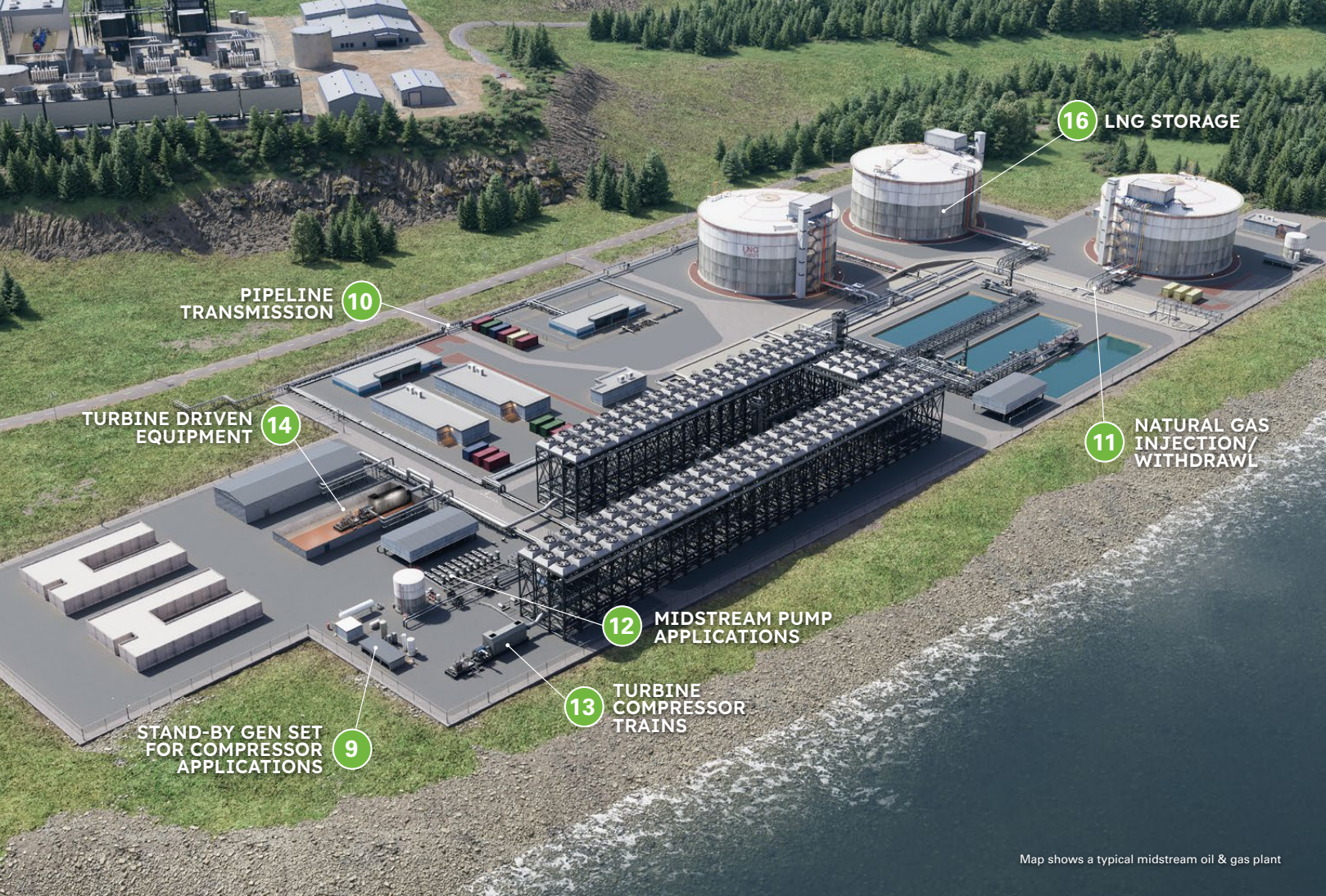
Map shows a typical upstream oil & gas plant

# UPSTREAM

## OIL & GAS PRODUCTION

The upstream sector, also known as exploration and production, is the initial phase of oil and gas production. The exploration, drilling, and extraction of crude oil and natural gas all occur in the upstream sector. This sector is crucial as it lays the foundation for the entire oil and gas supply chain, leading to the midstream and downstream sectors. Regal Rexnord supports upstream processes by supplying essential components for drawworks, top drives, mud pumps, and more.

Regal Rexnord™ Products	1	2	3	4	5	6	7	8	9
<b>BEARINGS</b>									
Sealmaster™, Link-Belt™ Mounted Ball							●	●	●
Rex™ SHURLOK™ Adapter Mount and Link-Belt Spherical Roller Bearings		●					●	●	●
Link-Belt Cylindrical Roller Bearings	●	●	●	●	●	●	●	●	●
Rollway™ Unmounted Bearings	●	●	●	●	●	●	●	●	●
Duralon™ Filament Sleeve Bearing		●	●			●			
<b>CLUTCHES &amp; BRAKES</b>									
Wichita AirMaKks (SSB/SSM) Pneumatic Brakes		●	●						
Svendborg BSFH Hydraulic Caliper Brakes		●	●						
Stearns™ 82,000 Series Brakes		●							
Twiflex T Series Hydraulic Caliper Brakes	●			●	●	●			
Bibby SE Modular Torque Limiters				●					
Wichita VM Series Hydraulic Brakes	●								
Wichita Pneumatic Operated Standard Vent Clutches			●						
<b>COUPLINGS</b>									
<b>High Performance</b>									
Rexnord™ Euroflex High Performance Disc Couplings					●		●		
Bibby™ Turboflex™ High Performance Disc Couplings					●		●		
Kop-Flex™ High Performance Disc Couplings					●		●		
Kop-Flex Diaphragm Couplings					●		●		
Ameridrives™ Diaphragm Couplings					●		●		
<b>Lubricated</b>									
Falk™ Lifelign™ Gear Couplings	●	●	●	●					
Ameridrives Americardan™ U-Joints						●			
<b>General Purpose Disc</b>									
Rexnord™ Thomas™ AMR/CMR Disc Couplings						●			
<b>Torsionally Soft</b>									
CENTAMAX™ Rubber-In-Sheer Couplings							●	●	●
<b>GEAR</b>									
Falk V-Class™ Gear Drives		●		●					
Nuttall Parallel Shaft Speed Reducers	●								
Bauer BG Series Helical Geared Motor				●					
<b>SPECIALTY COMPONENTS</b>									
TB Wood's Sheaves				●					
Perceptiv™ Monitoring System	●	●		●			●	●	●
Powerlign™ Torque Monitoring					●		●		



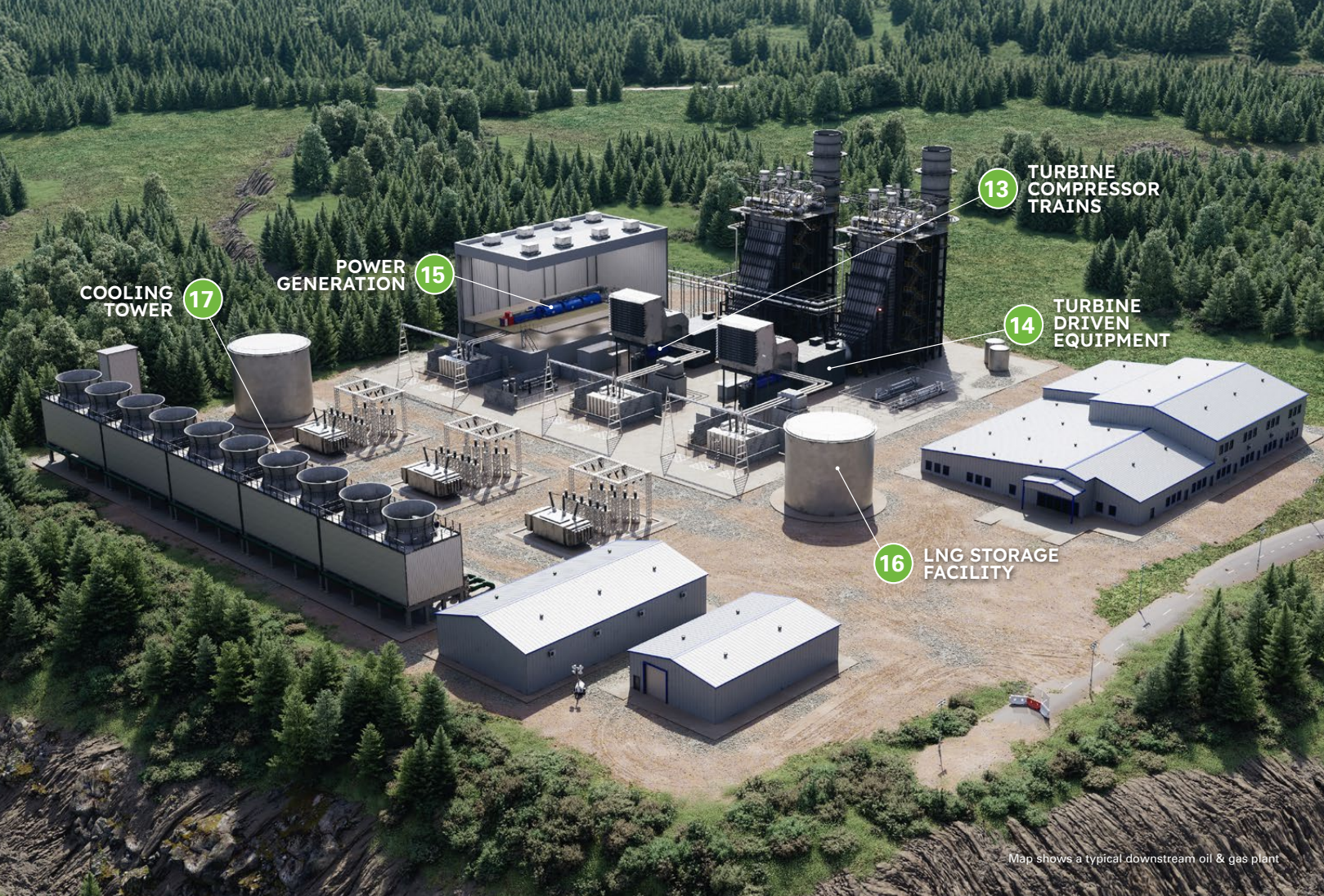
Map shows a typical midstream oil & gas plant

# MIDSTREAM

## OIL & GAS PRODUCTION

The midstream sector is a crucial stage in the oil and gas industry that bridges the gap between the upstream (exploration and production) and downstream (refining and distribution) sectors. It involves the processing, storage, and transportation of oil, natural gas, and natural gas liquids. The midstream sector plays a vital role in transforming raw hydrocarbons into usable materials for refineries and petrochemical plants. Regal Rexnord supports midstream processes through supplying innovative solutions for applications such as LNG storage, pump applications, turbine driven equipment, natural gas injection/withdrawal, and more.

Regal Rexnord™ Products	9	10	11	12	13	14	16
<b>BEARINGS</b>							
Sealmaster™, Link-Belt™ Mounted Ball	●						
Rex™ SHURLOK™ Adapter Mount and Link-Belt Spherical Roller Bearings	●						
Link-Belt Cylindrical Roller Bearings	●	●	●	●	●	●	●
Rollway™ Unmounted Bearings	●	●	●	●	●	●	●
Duralon™ Filament Sleeve Bearing		●		●			
<b>COUPLINGS</b>							
<b>High Performance</b>							
Rexnord™ Euroflex High Performance Disc Couplings		●			●	●	
Bibby™ Turboflex™ High Performance Disc Couplings					●	●	
Kop-Flex™ High Performance Diaphragm Couplings		●			●	●	
Kop-Flex High Performance Disc Couplings		●			●	●	
Ameridrives™ Ameriflex™ High Performance Diaphragm Couplings		●			●	●	
<b>Elastomeric</b>							
Rexnord™ Omega™ & Viva™ Elastomeric Couplings				●			●
Falk™ Wrapflex™ Elastomeric Couplings				●			●
TB Wood's™ Sure-Flex Plus™ Elastomeric Couplings				●			●
<b>General Purpose Disc</b>							
Rexnord™ Thomas™ AMR/CMR Disc Couplings			●				●
Rexnord Thomas XTSR Disc Couplings		●	●	●			●
<b>Torsionally Soft</b>							
CENTAMAX™ Rubber-In-Sheer Couplings	●						
CENTAX™ -SEC-G Highly Elastic Membrane Couplings							●
<b>GEAR</b>							
Falk V-Class™ Gear Drives				●			
Bauer BG Series Helical Geared Motor				●	●		
<b>SPECIALTY COMPONENTS</b>							
TB Wood's Sheaves			●				
Cambridge Water Screens							
Perceptiv™ Monitoring System	●			●	●		
Powerlign™ Torque Monitoring		●			●	●	



# DOWNSTREAM

## PRODUCTION AND POWER GENERATION

The downstream sector of the oil and gas industry encompasses the refining, processing, marketing, and distribution of petroleum and natural gas products. It transforms crude oil into usable products like gasoline, diesel, and jet fuel. Raw natural gas is also processed into purified forms during this stage. These products are then transported through pipelines, ships, and trucks to various markets. Additionally, petrochemicals used in making plastics, fertilizers, and synthetic fibers are produced in this sector. The downstream sector is essential for turning raw materials into valuable commodities and ensuring their delivery to consumers and industries worldwide. Regal Rexnord provides solutions for important downstream applications such as cooling towers, turbine compressor trains, and power generation equipment.

Regal Rexnord™ Products	Turbine Compressor Trains	Turbine Driven Equip	Power Generation	LNG Storage Facility	Cooling Tower
<b>BEARINGS</b>					
Sealmaster™, Link-Belt™ Mounted Ball			●		●
Sealmaster Mounted Tapered Roller Bearing			●		
Rex™ SHURLOK™ Adapter Mount and Link-Belt Spherical Roller Bearings			●		●
Link-Belt Cylindrical Roller Bearing	●	●	●	●	
Rollway™ Unmounted Bearing	●	●	●	●	
Duralon™ Filament Sleeve Bearing			●		
<b>CLUTCHES &amp; BRAKES</b>					
Marland CECON Clutches		●			
Formsprag FTS Turbine Starter Clutches		●			
<b>COUPLINGS</b>					
<b>High Performance</b>					
Rexnord™ Euroflex High Performance Disc Couplings	●	●	●	●	
Bibby™ Turboflex™ High Performance Disc Couplings	●	●	●		
Kop-Flex™ High Performance Diaphragm Couplings	●	●	●		
Kop-Flex High Performance Disc Couplings	●	●	●		
Ameridrives™ Ameriflex™ High Performance Diaphragm Couplings	●	●	●		
<b>Elastomeric</b>					
Rexnord Omega™ & Viva™ Elastomeric Couplings			●	●	
Falk™ Wrapflex™ Elastomeric Couplings			●	●	
TB Wood's™ Sure-Flex Plus™ Elastomeric Couplings			●	●	
<b>General Purpose Disc</b>					
Rexnord Addax™ Composite Disc Couplings					●
Rexnord Thomas™ AMR/CMR			●	●	
Rexnord Thomas XTSR Disc Couplings			●	●	
<b>Torsionally Soft</b>					
CENTAMAX™ Rubber-In-Sheer Couplings			●		
CENTAX-SEC-G Highly Elastic Membrane Coupling			●	●	
<b>GEAR</b>					
Bauer BG Series Helical Geared Motor	●				
Falk CTA Series Gear Drive					●
<b>SPECIALTY COMPONENTS</b>					
Cambridge Water Screens					●
Perceptiv™ Monitoring System	●		●		●
Powerlign™ Torque Monitoring	●	●	●		

## BEARINGS

**Rex™ & Link-Belt™ Mounted Spherical Roller Bearings** U M D

Rex™ & Link-Belt™ spherical bearings are highly customizable and high-performance; they are available in a wide array of sizes, sealing options, shaft locking mechanisms, and end caps to provide the right bearing for your application.

Spherical roller bearings are the workhorse of industry. Used in sectors from mining and manufacturing to cement, paper products, and more, spherical roller bearings keep equipment running smoothly. Rexnord is the trusted name in spherical roller bearings.

**Sealmaster™ Mounted Tapered Bearings** M D

Sealmaster™ tapered bearings feature split cast-iron housings and unique features for better sealing performance + improved lubrication, with a long-standing reputation for increasing

- Tapered Roller Bearings
- Fluoropolymer Coated Cast Iron Split Housings
- Replaceable Cartridge Insert (RCI)
- Contact Seals
- Positive Lubrication System
- Collar Mount System
- Specialized Food Grade
- Lubrication application uptime

**Link-Belt™ & Rollway™ Cylindrical Roller Bearing** U M D

We offer standard cylindrical roller bearing sizes and styles, as well as custom bearings.

- Customizable to your application
- Case-carburizing bearing quality steel and complex geometries
- Designed to consistently perform in demanding situations
- Value on delivery and performance
- High performance in diverse applications

**Rex™ SHURLOK™ Adapter Mount** U M D

Rex highly customizable, high-performance bearing. SHURLOK™ A solid housing and patented tapered adapter design ensures fast and easy installation + removal

**Rollway™ Unmounted Bearing** U M D

Rollway bearings offer a complete line of cost-effective unmounted bearings available in a wide range of sizes, cages, and bearing types. Unmounted bearings offer a variety of benefits when a housing is not needed. Our products support a broad range of applications by leveraging a large portfolio of specialized products that offer different mixes of radial load, thrust load, speed, and dimensional options. Explore the spherical bearings, deep groove ball bearings, tapered roller bearings, and more.

**Duralon™ Filament Sleeve Bearing** U M D

Duralon™ filament wound bearings are truly innovative. Made from corrosion-resistant fiberglass and epoxy resin, these filament bearings are tough, lightweight, and easily customized. Designed for use in high load oscillating pivoting and linear applications where lubrication is an issue, Duralon™ composite filament bearings withstand extremely harsh environments and deliver outstanding performance.

## CLUTCHES &amp; BRAKES

**Wichita AirMaKKs (SSB/SSM) Pneumatic Brakes** U

Wichita AirMaKKs (SSB/SSM) pneumatic brakes are designed for use in low-speed applications such as winches and drawworks, to provide both parking and emergency stop braking functions.

- Air cooled, spring-applied, high torque capacity brakes
- Air-tube actuation for precise, linear control of brake torque
- Marine protected versions for deck area/offshore rig applications, where sea spray and direct seawater splash risk is prevalent

**Svendborg BSFH Hydraulic Caliper Brakes** U

Svendborg BSFH failsafe hydraulic caliper brakes are available as Mono and Dual-Spring and with single or dual pistons to optimize brake selection. Multiple units may be used to address torque and thermal requirements.

- Modular design simplifies installation
- Offshore protection of internal and exposed parts
- API 7K approval and certification available according to international standards (DNV, ABS, ATEX)

**Twiflex T-series Hydraulic Caliper Brakes** U

Twiflex T-series modular calipers are hydraulic pressure-applied brakes utilized in applications such as top drive and transmission holding applications. They feature a split housing with various mounting options to provide a direct interchange with common brake platforms.

- Compact and robust designs with protection options to suit the application
- Mounting and port interface aligned with common caliper designs
- Pad retraction springs ensure running clearance in the 'brake off' state

**Stearns™ 82,000 Series Brakes** U

Designed specifically for jackup rigs, the Stearns SAB 82,000 Series brake offers both horizontal and vertical mounting configurations as well as corrosion protection. Standard features include:

- Cast or ductile iron enclosure
- Internal space heater
- Self-adjusting design
- Deadman side release

**Wichita Standard Vent Clutch** U

Wichita Standard Vent Clutches feature a large friction area for high-energy, smooth, controlled start-up. This air-applied clutch with a full circle design is available in 1, 2, 3, or 4 disc configurations to suit various shaft diameters, speeds, and torque requirements.

- Quick change ring design provides easy maintenance and smooth, controlled engagement
- Centrifugal force resistance: Unaffected by centrifugal force, these marine clutch units are custom-built to meet marine classification society requirements
- Designed for high inertia loads where smooth, controlled starts are essential

**Wichita VM Series Hydraulic Brakes** U

Wichita VM Series hydraulically operated brakes are designed for vertical shaft installations associated with top drive applications.

- High energy capacity for dynamic stops
- Fully sealed versions for ATEX compliance
- Low temperature operating options

## CLUTCHES &amp; BRAKES

**Marland CECON Clutches** D

Marland CECON Clutches (Completely Enclosed for Continuous Operation) feature a fully enclosed housing designed to support a Marland freewheeling clutch between two independently supported shafts. These clutches are ideal for applications with high shaft speeds, harsh atmospheric conditions, continuous operation, or non-horizontal shaft axes.

- Disconnect feature provides physical separation of the input and output shafts, allowing maintenance on the non-energized driver
- View port allows visual confirmation of disconnect/connect status
- Full-speed testing enables testing of isolated equipment before reconnection

**Wichita Standard Vent Clutch** U

Wichita Standard Vent Clutches feature a large friction area for high-energy, smooth, controlled start-up. This air-applied clutch with a full circle design is available in 1, 2, 3, or 4 disc configurations to suit various shaft diameters, speeds, and torque requirements.

- Quick change ring design provides easy maintenance and smooth, controlled engagement
- Centrifugal force resistance: Unaffected by centrifugal force, these marine clutch units are custom-built to meet marine classification society requirements
- Designed for high inertia loads where smooth, controlled starts are essential

## COUPLINGS

**Rexnord™ Euroflex High Performance Disc Couplings** U M D

High-performance Rexnord Euroflex disc couplings are uniquely designed and manufactured for each and every application they encounter in the energy industry. Ideal for applications with higher-than-normal speed requirements and misalignment needs, Euroflex couplings can be designed to meet weight restrictions and alignment conditions.

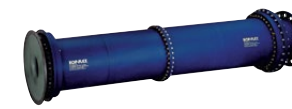
- Low-mass and reduced moment coupling designs offer high torque and speed capacities
- Peak torque capacity over 17 million in-lbs (2,000,000 Nm)
- Accommodates speeds in excess of 30,000 rpm

**Bibby™ Turboflex™ High Performance Disc Couplings** U M D

These torsionally stiff, light weight couplings are capable of transmitting high torques at high speeds while accepting significant levels of angular, radial, and axial misalignment.

- Scalloped profile disc pack optimized for high-speed compressor applications
- Scalloped profile disc pack optimized for high-speed compressor applications
- Phosphate coating standard on components
- Shrouded fasteners for reduced windagemarket
- Fully compliant to API 671/ISO10441
- Disc material – 300 series stainless, Inconel option
- Coated or uncoated discs
- Phosphate coating standard on components
- Shrouded fasteners for reduced windage

## COUPLINGS

**Kop-Flex™ High Performance Diaphragm Couplings** U M D

These couplings are engineered to accommodate a broad range of demanding operating conditions: boiler feed pumps, centrifugal and axial compressors, generator sets, test stands, gas and steam turbines, marine drives, etc. The Kop-Flex diaphragm coupling offers superior quality, and a wide variety of standard and custom designs backed by unsurpassed engineering expertise.

- Field-replaceable, stockable diaphragms
- Patented specially-contoured one-piece accommodates more misalignment and greater range of torsional stiffness
- Diaphragms are 15-5PH stainless steel
- Inherently low windage design
- Conforms to API 671 specifications

**Kop-Flex High Performance Disc Couplings** U M D

Kop-Flex high performance disc couplings are available in four designs to accommodate all operating conditions and applications. In reduced moment with lowest overhung moment, RM provides interlocking (redundant) configuration.

- Meets API 671
- Peak torque capacity over of over 16.6 million lb-in (1647 kN-m)
- Bore capacity exceeds 19 inches ( 480 mm)
- Stainless steel Koplion™\* coated flexible disc packs have superior lifespan

**Ameridrives™ High Performance Diaphragm Couplings** U M D

The heart of the Ameriflex™ multiple convoluted diaphragm coupling is the stainless steel diaphragm pack. The convolution provides for a constant stiffness over a larger range of axial travel than does a disc or contoured diaphragm.

- High torque to diameter and weight ratio
- Diaphragms are 15-5PH stainless steel
- Low bending moments and axial force result in lower bearing loads while maintaining high torque capacity
- High axial travel capability with constant axial stiffness
- API 671 compliant

**Falk™ Lifalign™ Gear Couplings** U

Falk Lifalign gear couplings' triple-crowned teeth are crowned on the root, tip and face to articulate freely and minimize wear caused by misalignment. By eliminating tip-loading while reducing backlash and radial clearances, Lifalign's triple-crown teeth can help protect equipment from damaging loads.

- 13 models for general purpose, high-speed and high-torque applications
- Large flex hubs accommodate high-torque applications in space-limited installations
- 28 sizes – Up to 43 inches (1,067 mm) bore capacity
- Up to 72,450,000 in-lb (8,185,763 Nm) torque capacity
- 3-year, heavy-duty warranty

\* Koplion is believed to be the trademark and/or trade name of E. I. du Pont de Nemours and Company and is not owned or controlled by Regal Rexnord Corporation or its affiliates.

## COUPLINGS

**Amerdrives™ Americardan™ Universal Joints** U

Amerdrives universal joints have the ability to operate at high misalignment angles. Operating angles up to 15 degrees are not uncommon. The bearing and seal design resists lubrication loss and contamination. This makes Amerdrives U-Joints suitable for applications where severe atmospheric conditions would put other couplings at a distinct disadvantage.

- Wing bearing design
- Longer life, minimal maintenance
- Lower operating cost
- Genuine Spicer components available upon request

**Rexnord™ Omega™ & Viva™ Elastomeric Couplings** M D

Omega & Viv elastomeric couplings are non-lubricated, material-flexing, split element tire couplings.

- Split-in-half design makes assembly and replacement easy
- Interchangeable hubs reduce inventory
- Features a high-misalignment capacity and torsionally-soft, weight-balanced flex elements

**Falk™ Wrapflex™ Elastomeric Couplings** M D

Wrapflex elastomeric couplings are non-lubricated, material-flexing couplings. They have excellent vibration damping capacity. The couplings offer a replace-in-place design for quick installation and replacement.

- ATEX certified
- Polyurethane element provides excellent wear and chemical resistance
- Offers an operating temperature range of -40 to 200 F (-40 to 93 C)
- Up to 133,000 in-lb (15,027 Nm) torque capacity
- Up to 4,500 rpm

**TB Wood's™ Sure-Flex Plus™ Elastomeric Couplings** M D

Sure-Flex Plus EPDM and Neoprene sleeves feature 4-way flexing action that absorbs virtually all types of shock, misalignment, and end float.

- Lubrication and maintenance are not required with Sure-Flex Plus couplings, ensuring clean, dependable, and quiet performance
- These couplings have a longer lifespan, lasting over 3 times longer than competitors
- Sure-Flex Plus couplings provide better value by allowing the use of smaller couplings, resulting in cost savings

**Rexnord™ Addax™ Composite Disc Couplings** D

Rexnord Addax is recognized as the benchmark for couplings in cooling tower applications. The lightweight, advanced composite material design increases critical speed, reduces vibration, and extends bearing life compared to alternative all-steel couplings.

- Configured-to-order based on application requirements
- Custom spacer lengths up to 275 inches (7,000 mm)
- Continuous torque ratings up to 36,200 lb-in (4,090 Nm)
- Shaft diameters up to 12.75 inches and bore capacity up to 5.06 inches

## COUPLINGS

**Rexnord Thomas™ XTSR Disc Couplings** M D

Thomas™ disc couplings are engineered for infinite life and optimized for motor, engine and turbine-driven applications. They feature low weight and high torque density, making them well-suited for both general purpose and critical process and API pumps.

- AGMA Class 9 compliant
- The all-metric design uses globally accepted units for tools and designs
- Standard manganese phosphate coating provides superior corrosion resistance
- Standard torque overload bushings provide protection against transient torque peaks, with reduced spark option available

**Rexnord Thomas AMR/CMR** U M D

Thomas AMR/CMR couplings are used in heavy-duty, slow to medium speed applications where shock loads, torque reversals or continuous alternating torque is present.

- Robust and economical components with standard cast spacer and forged steel hubs
- Open lug-type spacer adds wrenching clearance for hassle-free assembly
- Flywheel adapter plate available in standard and custom bolting patterns to accommodate virtually any flange design
- Flexibility to accommodate multiple disc pack design and material options

**CENTAX™-SEC Series G Torsionally Soft Couplings** M D

The CENTAX-SEC-G is a highly elastic membrane coupling with high misalignment capacity. It is ideal for use in rigid or flexible-mounted drives.

- The rubber element features high torsional and radial flexibility, combined with a membrane that's flexible in both axial and angular directions
- With a high torsional flexibility, the CENTAX-SEC-G offers easy system adaption by selecting either the single-row or multi-row arrangement and appropriate degree of shore hardness
- Damps torsional vibrations and shock loads while compensating axial, radial, and angular misalignments
- The CENTAX-SEC-G is effectively ventilated for a high level of allowable energy loss

**CENTAMAX™ Torsionally Soft Couplings** U M

Overload protection, different degrees of shore hardness, and easy adjustment of torsional flexibility make CENTAMAX a cost-effective and reliable coupling system that can be customized to various mounting and application conditions.

- Efficient self-ventilating design for improved performance
- High thermal capacity allows for superior allowable power loss
- Longer equipment life in low-emission diesel engine systems
- Rubber-in-shear design provides torsional flexibility and protects against vibratory torques

## GEAR

**Falk™ V-Class™ Gear Drives** U M

The Falk V-Class Gear Drive is the standard in gear drives — a drive that's born to lead and built to last. When asked for the gear drive that delivers reliability, keeps maintenance costs down, maximizes uptime and utilizes the latest technology, the answer is the Falk™ V-Class™. With its cooler operating temperature, optimal power and advanced technology, the Falk™ V-Class™ Gear Drive outperforms and outlasts the competition.

**Nuttall Parallel Shaft Drives** U

TDS Parallel shaft speed reducers provide high torque capability and proven dependability. Type TDS standard features include through hardened single helical gears, tapered roller bearings, large inspection plates, a positive splash system for lubrication, extra wide bearing spans and center bearing supports. All Type TDS units can be assembled with a variety of horizontal and vertical input and output shaft arrangements extending on either side of the speed reducer. Hollow output shafts are also available.

**Bauer Helical Inline Gear Motor** U M D

Known for its reliability and high operating efficiency, offering a range of standard features. With an inverter-friendly design and flexible mounting options, it provides seamless integration into many oil and gas applications and unparalleled integration possibilities due to protection from dust and water spray, low operating noise, and standard CAGE CLAMP™ connection.

**Falk CTA Series Gear Drive** D

- Center Distances 1.33" To 3.25" | Ratios 5:1 To 100:1
- Directly replaces Amarillo™\*
- 1110, 1311, 1712, and 1713A Gearboxes
- Meets the requirements of CTI STD-111 and AGMA standards
- All bearings are rated for 100,000+ hour L10 life
- USA assembly capability for Quick Ship program

\* Amarillo is believed to be the trademark and/or trade name of Amarillo Gear Company LLC and is not owned or controlled by Regal Rexnord Corporation or its affiliates.

## SPECIALTY COMPONENTS

**TB Wood's™ Sheaves and Bushings** U M

Browning neoprene wrapped belt provides smooth quiet operation. Single fabric design allows greater flexibility.

**FHP Sheaves:**

- Available in both Finish Bore or Bushed Bore offerings
- AKH Sheaves are available in 1 or 2 grooves while the BHK's are offered and 1 & 2 grooves
- H Bushing, which has a bore range from 3/8" to 1-1/2"
- Combination groove on the BK Sheaves can accommodate a wide assortment of belts (4L, L, 5L, A, AX, B & BX) for maximum flexibility and horsepower range
- A paint finish that protects the product from rusting in high moisture environments
- Bushed products provide more flexibility of inventory, by just changing out the bore size of the bushing
- Sheaves are balanced and accurately machined to minimize vibration
- The large selection of products ensures to provide the best option for any specific application

**Cambridge™ Water Screen Systems for Cooling Towers** M D**Stationary Water Screens**

- PE certified design
- US manufacturing

**Traveling Water Screens**

- A self-cleaning filtration system with a rotating mesh belt and nozzles that spray debris into a trough for disposal
- Replace old screens without modification of the basin
- Reduce maintenance costs
- Safety increased through elimination of water screens cleaning
- Efficiency increased by removing harmful debris from water

**Perceptiv™ Intelligent Reliability Solutions** U M D

- Safely see issues remotely (verses route-based)
- Access information any time/day with no weather hazards
- Plan maintenance and stay ahead of failures
- Extend equipment life

**Powerlign™ Torque Monitoring** U M D

Powerlign monitors torque differentials to indicate potential performance issues such as blade fouling and over-torque. These performance issues cause more fuel burn, increased NOx emissions, and increase likelihood of coupling shaft or other equipment failures.

- Powerlign acts as an important part of a closed loop system by establishing certain thresholds that can be configured to trigger an alert or alarm. Powerlign can also be used as a control system to shut down equipment or direct them in the flow of gas or fuel to maintain load and efficiency.
- Features a patented, unique architecture that allows for more advanced system control with full integration support for distributed control systems (DCS) or PCs and laptops for analyzing system data.

# REGAL REXNORD SERVICES AND FALK RENEW™

**Regardless of the age or condition of your equipment, Falk Renew has the right solution**

- Remanufactured gear drives
- Falk™, Link-Belt™ and Rexnord™ service parts
- Drive exchange programs
- Falk and other OEM gear drives
- 11 global repair centers

**Predictive Maintenance**

- Vibration analysis
- Thermal analysis
- Lubrication analysis
- Bore scope check
- Noise analysis
- Running gear tooth contact check
- Data logging
- Strain gauging
- Systems assessment
- Remote monitoring

**Repair, Refurbish, & Rebuild**

- Upgrade and re-rate
- Logistics options
- Spares programs
- Failure analysis

**Universal Drive Shaft & Clutch Repair**

- All major brands available from stock
- Same-day pricing and availability
- Standard or oversized steel tubing
- Special carbon fiber composite tubing
- Computerized selection program
- Expedited or emergency shipment program
- Precision balancing
- Repair and refurbishment of existing assemblies
- Special designs available — short-coupled, constant velocity, quick disconnect, and more

**Aftermarket Gears & Parts**

- Gears, pinions and shafts for Falk and Link-Belt drives
- Gearing elements for all makes of gear drives
- Bearings, seals, shims, and gearbox accessories
- Transportation and heavy equipment gearing
- Heavy equipment shafts and customer parts
- Reconditioned gear programs for emergency breakdowns
- Reverse engineered gear sets

**Customized Programs**

- Offsite/onsite service and repair contracts
- Asset management programs
- Asset efficiency
- Asset optimization



# REGAL REXNORD SERVICES



**High Performance Coupling Recertification Services**

- Comprehensive mechanical/metallurgical inspection.
- Provide an evaluation report with detailed findings confirming the value of the recertification.
- Update design to current standards.
- Glass bead blast cleaning, hand polishing.
- Replacement of flexible elements (disc packs) where applicable.
- Replacement of ALL hardware; shims, bolts, nuts, washers.
- Re-balance to original specifications.
- Package in the custom wooden crate; long term storage protection options available.





## Regal Rexnord

Customer Service: 800-626-2120

Technical Service: 800-626-2093

[CustomerService.PTSolutions@regalrexnord.com](mailto:CustomerService.PTSolutions@regalrexnord.com)

[regalrexnord.com](http://regalrexnord.com)

The proper selection and application of products and components, including assuring that the product is safe for its intended use, are the responsibility of the customer. To view our Application Considerations, please visit <https://www.regalrexnord.com/Application-Considerations>.

To view our Standard Terms and Conditions of Sale, please visit <https://www.regalrexnord.com/Terms-and-Conditions-of-Sale>.

"Regal Rexnord" is not indicative of legal entity. Refer to product purchase documentation for the applicable legal entity. Regal Rexnord, Link-Belt, Rex, Falk, V-Class, SHURLOK, Quadrive, Rexnord, Autogard, Tolllok, Thomas, Lifelign, Omega, Viva, Wrapflex, Addax, and Falk Renew are trademarks of Regal Rexnord Corporation or one of its affiliated companies.  
© 2015, 2024 Regal Rexnord Corporation, All Rights Reserved. MCB-VM1-011-C-EN-US 10/24

 **RegalRexnord**